

CONFIGURING NETSERIAL, WILDCAT & PXW

Note: Netserial is sold by www.pcmicro.com for US \$25 for Sysops, contact them for the discount.

<https://pcmicro.com/netserial/sysop>

Note: the present stable version being used by most WINSnet Sysops at the time of this document is **Version 4.34.2** (Latest download link below)



<https://pcmicro.com/netserial/downloadv4/>

NETSERIAL SETUP HELP

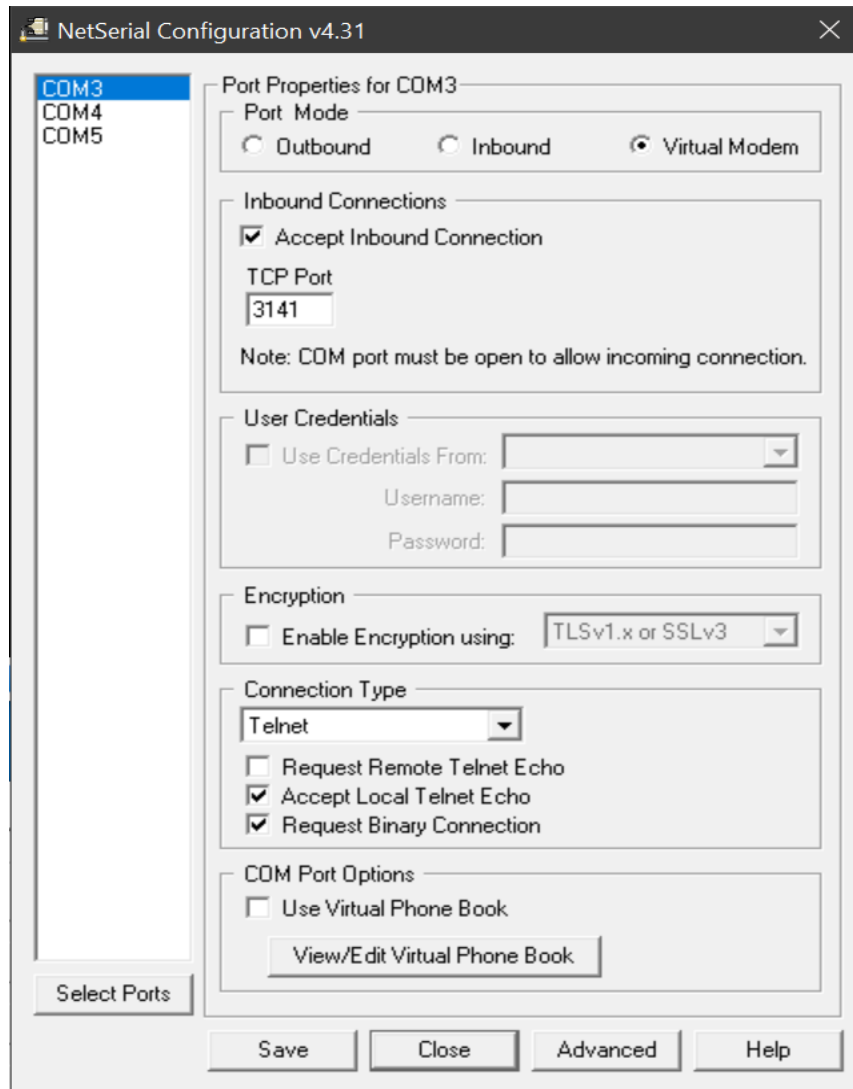
This document is to help sysops using a Wildcat BBS ([WINS](#)) and Platinum Xpress for Windows ([PXW](#)) to install, setup and optimize Netserial (vModem). It is maintained by Terry Roati the sysop of [The File Bank BBS!](#) who can be contacted at sysop@tfb-bbs.org for corrections, help and any suggestions.

INDEX

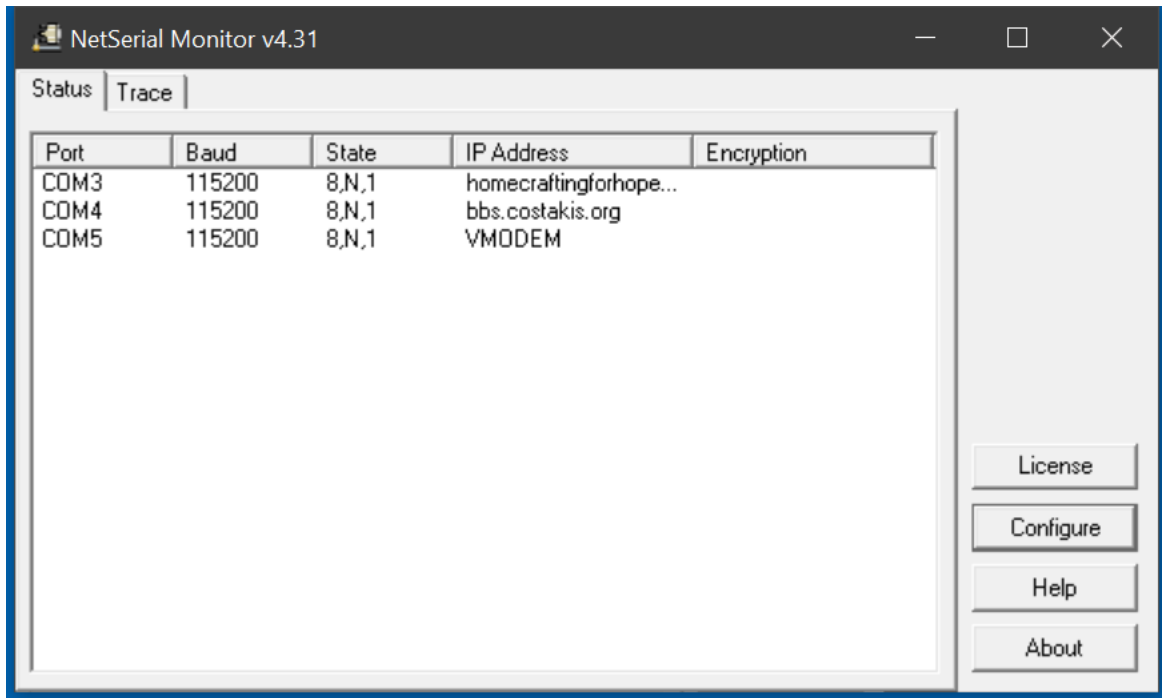
Page 2	Netserial Configuration
Page 5	Wildcat Configuration
Page 8	PXW Configuration
Page 11	Error Help

NETSERIAL CONFIGURATION

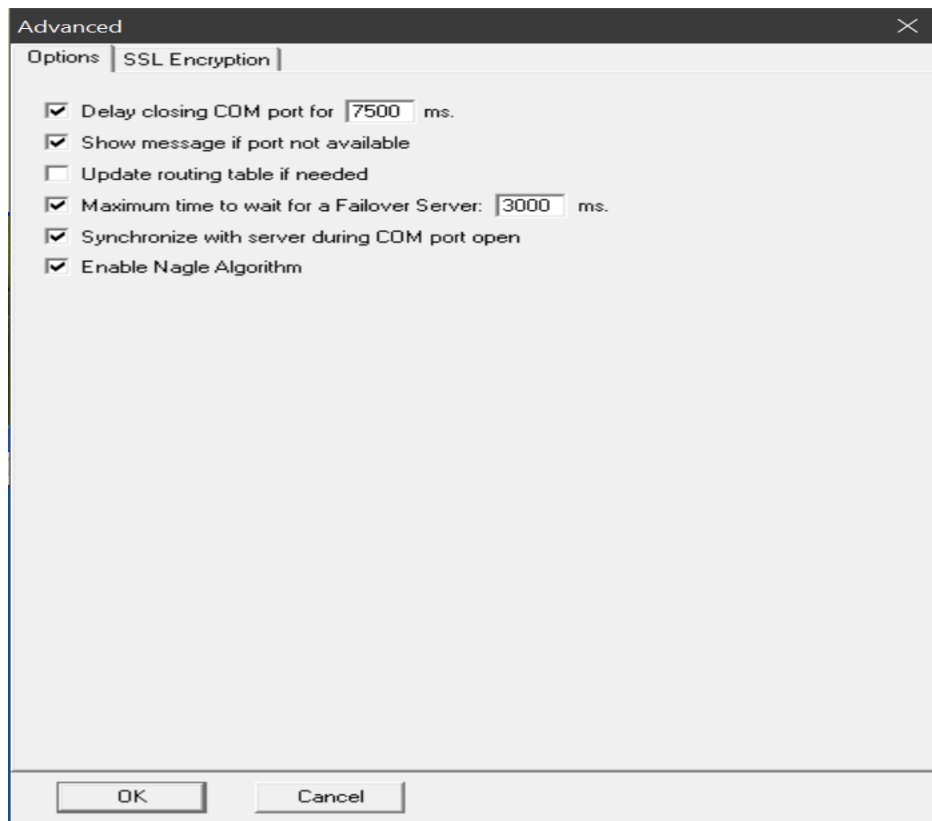
- A. First configure Netserial, in my case I configured 3 ports as below. One port is enough but if you have spare nodes then 2 ports is better but if you are Hub then I suggest you use 3 ports.



Netserial showing 3 ports being used.



Netserial showing 3 ports in use.



Try to disable "Enable Nagle Algorithm" if there are connection issues.

Advanced

Options SSL Encryption

Encryption Strength

Minimum: Low 64 or 40 bits

Maximum: High Greater than 128 bits

Encryption Ciphers

☒ RC4* ☒ 3DES* ☒ Camellia ☒ ChaCha ☒ AES

Display Ciphers

* The RC4 and 3DES ciphers have been depreciated and will be removed from future versions of the OpenSSL Toolkit.

Certificate

☐ Require Validated Certificate

☐ Require Validated Common Name

%C

☐ Require Validated Organization Name

☒ Do not require a certificate to be signed

☒ Use built-in certificate authority file

☐ Provide custom certificate authority file >>

☐ Supply Certificate to remote connection

Certificate File:

C:\Program Files\NetSerial\sample.pem

Choose File Change Certificate Password

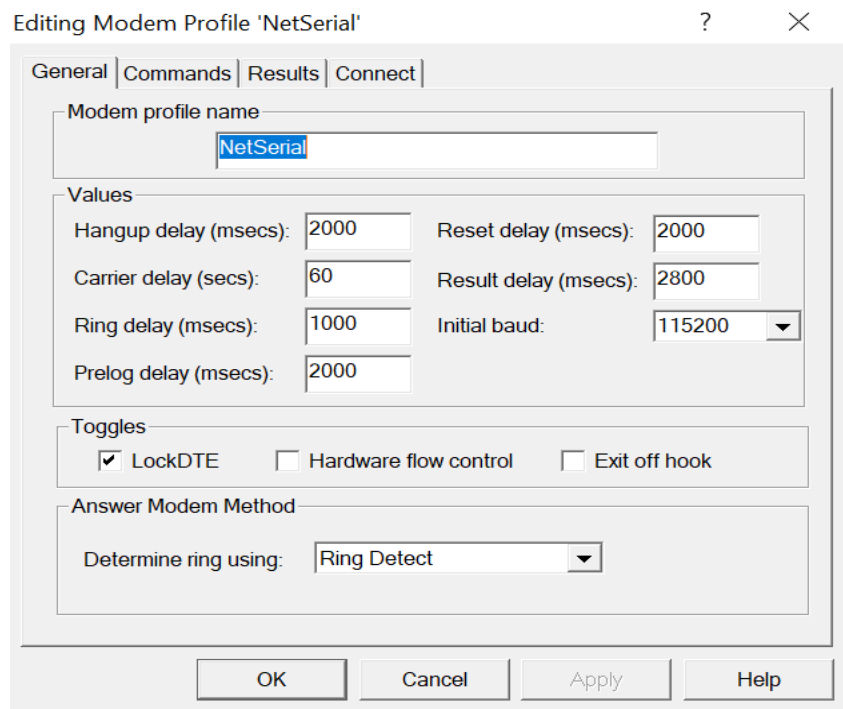
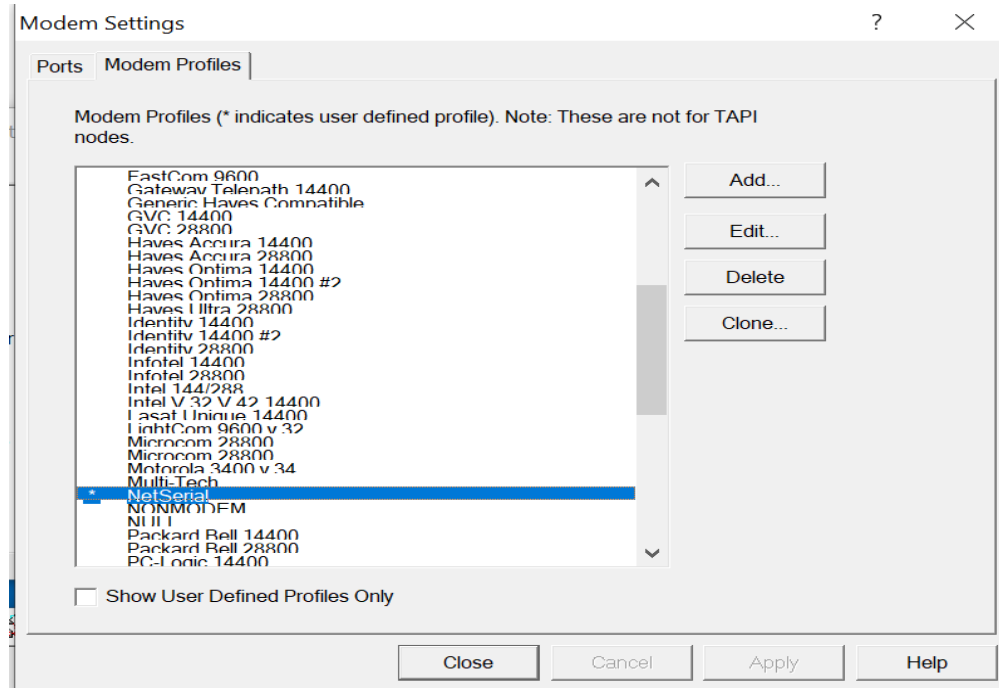
OK Cancel Restore Default Settings

Leave the above two screens on the default values.

WILDCAT CONFIGURATION

B. Next configure Wildcat. Open Configuration Manager, Modems Setup, Modem Profiles.

Add a new modem "Netserial" as below.



If you having connection issues or seeing CRC errors then lower the Initial baud rate.

Editing Modem Profile 'NetSerial' ? X

General Commands Results Connect

Modem commands

Reset (1st string sent to modem):
ATZ

Initialize (2nd string sent to modem):
AT&C1&D2

Answer:
ATA

Off hook:
ATH0

OK Cancel Apply Help

Editing Modem Profile 'NetSerial' ? X

General Commands Results Connect

Static

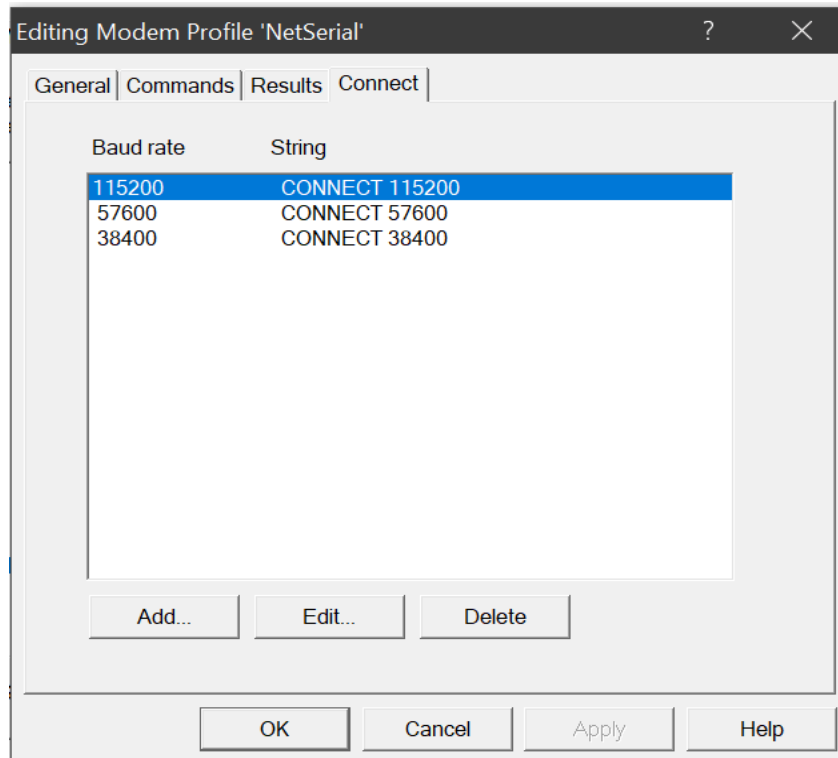
Ring:
RING

Reliable result:
ARQ|MNP

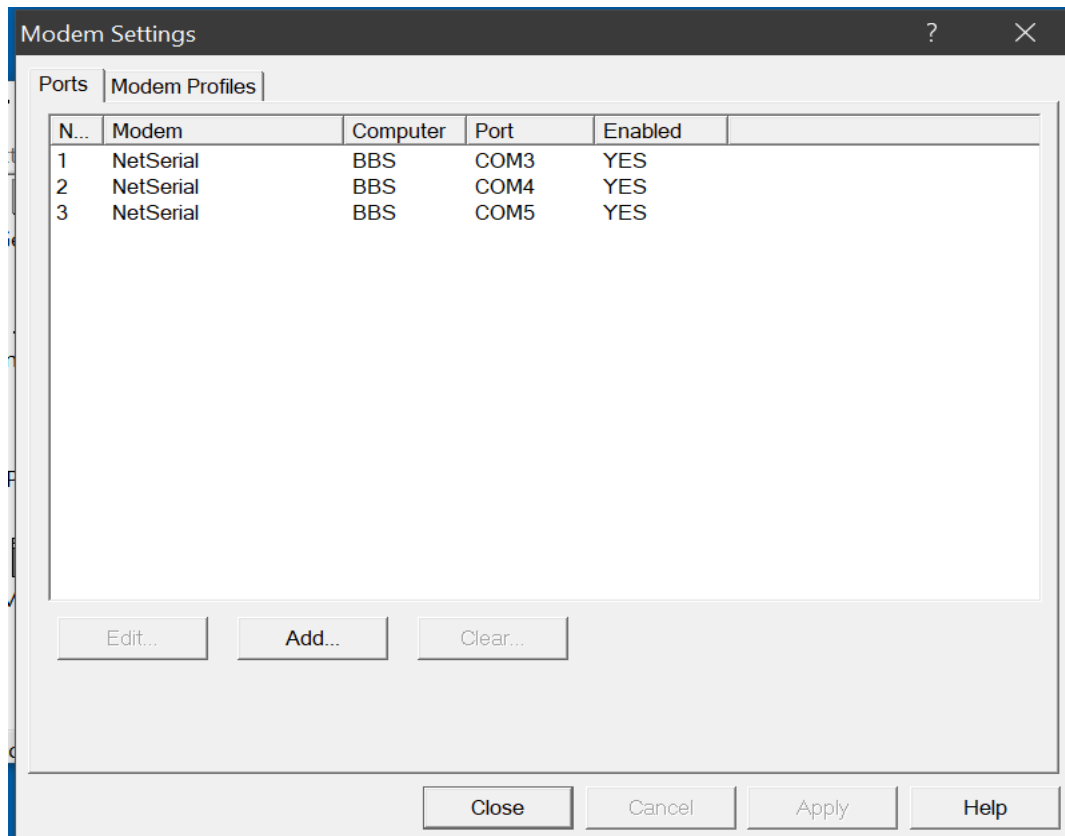
Connect:
CONNECT

☐ Enable Caller Id

OK Cancel Apply Help

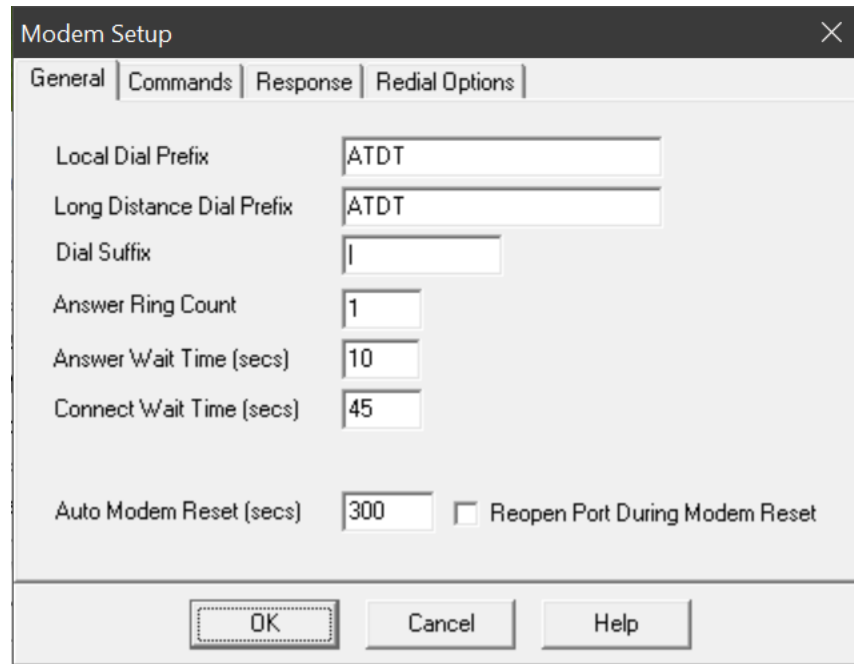


Add connect strings for Baud rates 38400, 57600 & 11500.



PXW CONFIGURATION

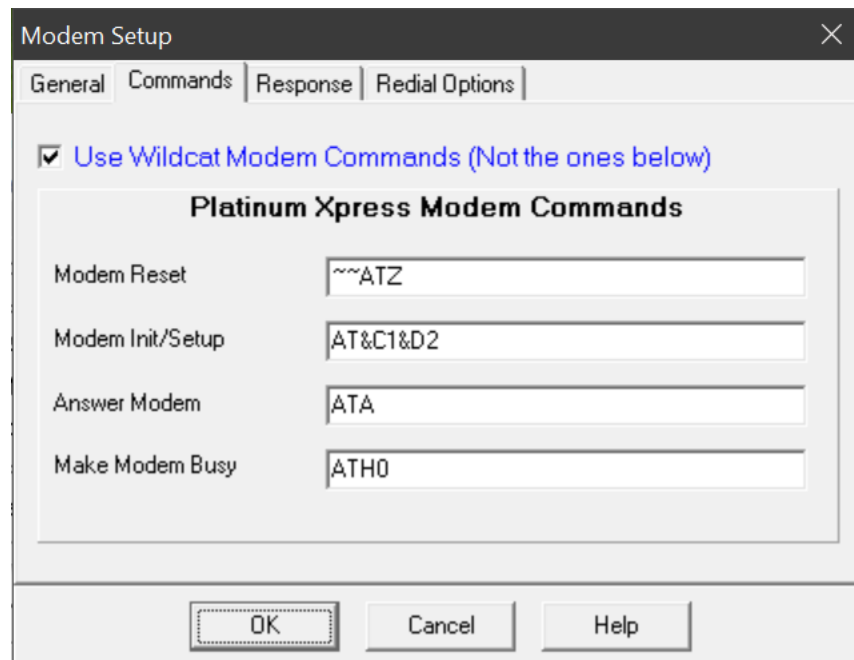
- C. Configure PXW. This is the PXW Modem Setup but PXW should be using the Wildcat profile.



The image shows the 'Modem Setup' dialog box with the 'General' tab selected. The fields are as follows:

Field	Value
Local Dial Prefix	ATDT
Long Distance Dial Prefix	ATDT
Dial Suffix	
Answer Ring Count	1
Answer Wait Time (secs)	10
Connect Wait Time (secs)	45
Auto Modem Reset (secs)	300
Reopen Port During Modem Reset	<input type="checkbox"/>

Buttons: OK, Cancel, Help



The image shows the 'Modem Setup' dialog box with the 'Commands' tab selected. The 'Use Wildcat Modem Commands (Not the ones below)' checkbox is checked. The 'Platinum Xpress Modem Commands' section contains the following fields:

Field	Value
Modem Reset	~ATZ
Modem Init/Setup	AT&C1&D2
Answer Modem	ATA
Make Modem Busy	ATH0

Buttons: OK, Cancel, Help

Modem Setup

General | Commands | Response | Redial Options

Incoming RING	RING
CONNECT	CONNECT
BUSY	BUSY
NO CARRIER	NO CARRIER
NO DIAL TONE	NO DIAL
VOICE	VOICE
Caller ID	NMBR =

☐ Detect Caller ID

OK Cancel Help

Modem Setup

General | Commands | Response | Redial Options

Redial Wait Time (secs) 300

Default Redial Limits When Creating Events

Modem Busy Redials	10
No Response/Timeout Redials	10
Post Connection Error Redials	10
Unreliable Poll Limit	10

OK Cancel Help

Dial Translation Table					
#	Phone or Address	New Phone	LD	Telnet	Comment
2	1:116/17	winserver.org:3456		YES	Robert Wolfe
3	1:116/110	99.71.150.2:3141		YES	Thomas Kloos
4	1:124/5013	rdfig.net:3141		YES	Ruben Figueroa
5	1:267/152	tnabbs.org:3456		YES	Antonio Rico
6	1:340/900	homecraftingforhope.com		YES	Frank Rauhauff
7	3:640/1111	bbs.costakis.org:3141		YES	Chris Costakis
8	3:640/1113	asylum.boardz.org:3141		YES	Jim Kulwicki

Configure Dial Translation Table under Basic Setup so PXW knows which Node will use Telnet.

Edit Dial Translation	
Phone or Node Address	
<input type="text" value="1:124/5013"/>	
New Phone Number or IP Address[port] for telnet node	
<input type="text" value="rdfig.net:3141"/>	
<input checked="" type="checkbox"/> This is a Telnet Node (Mailer will use Telnet)	
<input type="checkbox"/> Use Long Distance Modem Prefix	
<input checked="" type="checkbox"/> Ignore Unpublish/Private Node Attribute (Ok to Poll)	
Comment	
<input type="text" value="Ruben Figueroa"/>	
<input type="button" value="OK"/> <input type="button" value="Cancel"/> <input type="button" value="Help"/>	

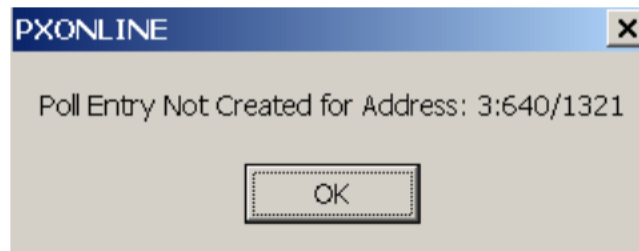
I recommend you use the Virtual Modem standard port 3141.

Don't forget to set your Netmail routing options in PXW so a node will be connected directly or routed through a different node.

Lastly, you must open port 3141 in your firewall to allow a connection.

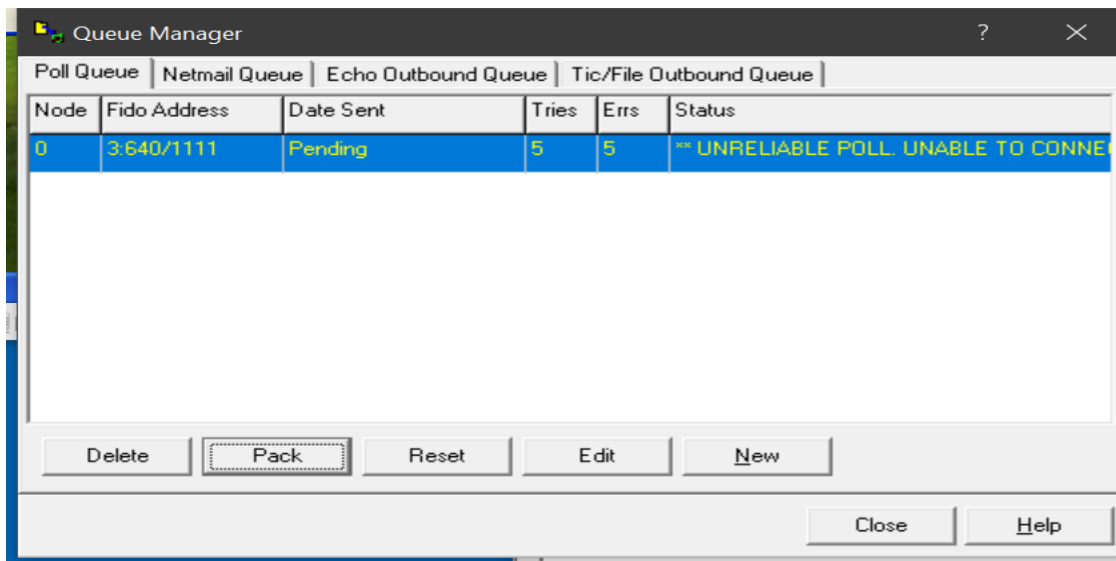
Remember wcOnline and px Online must be running as well.

ERROR HELP

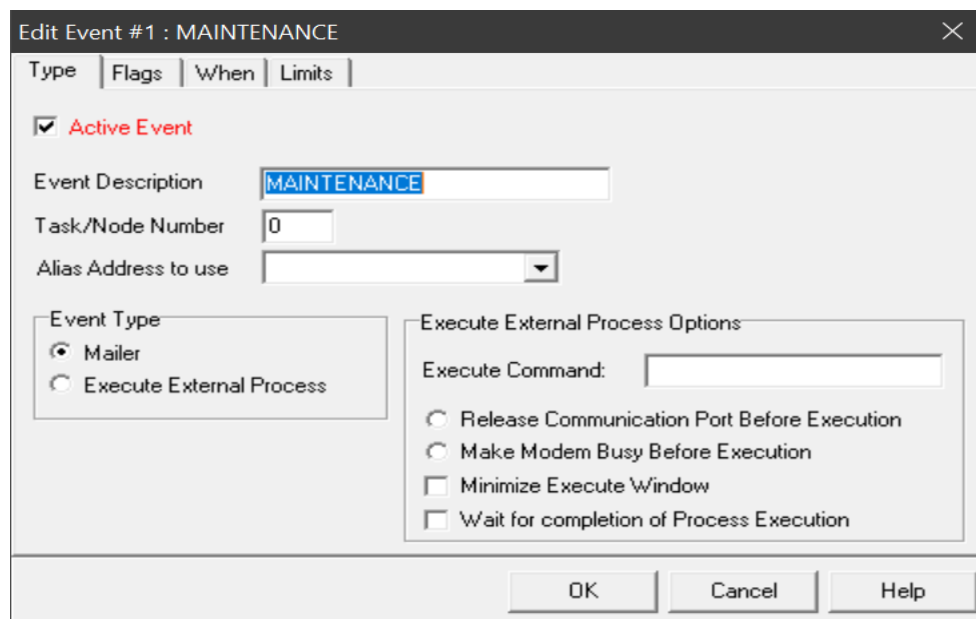


If you see the above error, it means the polls between the two nodes have reached the limit.

You must manually reset this in PXW Queue tab below.



I suggest that you can create a daily event to reset the queue as below.



Edit Event #1 : MAINTENANCE

Type | Flags | When | Limits

☐ SHUTDOWN ALL NODES
☒ Scan for Mail at Event Startup
☒ Toss Mail When Received
☐ Mailer Only (ZMH). No Human Callers.
☒ Allow File Requesting
☒ Allow File Requesting During Your Calls.
☐ Do Not Answer Modem
☐ Beep When Modem Rings
☒ Reset Exhausted Redials
☒ Do Not Send File Attaches
☐ Do Not Send Mail Bundles
☐ Do Not Send AKAs
☒ Pack Bundle Queue
☒ Pack Poll Queue
☒ Pack TIC Queue
☒ Check File Announcements
☐ Trim Logs Keep Days 4
☐ Send AreaFix Notification
☐ Send FileFix Notification
☒ Poll 24 hr CM (CrashMail) Systems Only
☐ Poll NON-CM (CrashMail) Systems Only

OK Cancel Help

Edit Event #1 : MAINTENANCE

Type | Flags | When | Limits

When

☐ Hourly
☒ Daily
☐ Monthly

☒ Sunday
☒ Monday
☒ Tuesday
☒ Wednesday
☒ Thursday
☒ Friday
☒ Saturday

Start Date 01/01 Start Time 00:00
Stop Date 12/31 Stop Time 00:15

☐ Run Event Once Only.
☐ Slide Event
 Run Every hour(s)

Last Run Date 01/01/1900
Last Run Time 00:00

Clear Last Run

OK Cancel Help

Edit Event #1 : MAINTENANCE

Type | Flags | When | Limits

Minimum Connect Rate 57600

Cost Range Allowed Before Polling Crash Mail (see COST TABLE)

Minimum Crash Cost (cents) 0
Maximum Crash Cost (cents) -1 (-1, no maximum limit)

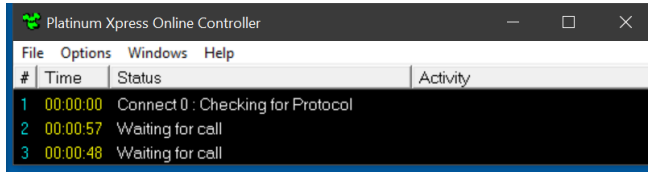
How Many Times To Redial Before Stopping?

Maximum Busy Redials 10
Maximum Timeout Redials 10
Maximum Bad Connect Redials 10

Total Timeouts/Bad Connects Before Making The Poll Unreliable: 10

OK Cancel Help

Error 2



When you see this error, it is usually caused by the system you are calling having wcOnline and or pxOnline being down.

This is usually caused by an MS Update.